

Wildlight Elementary School

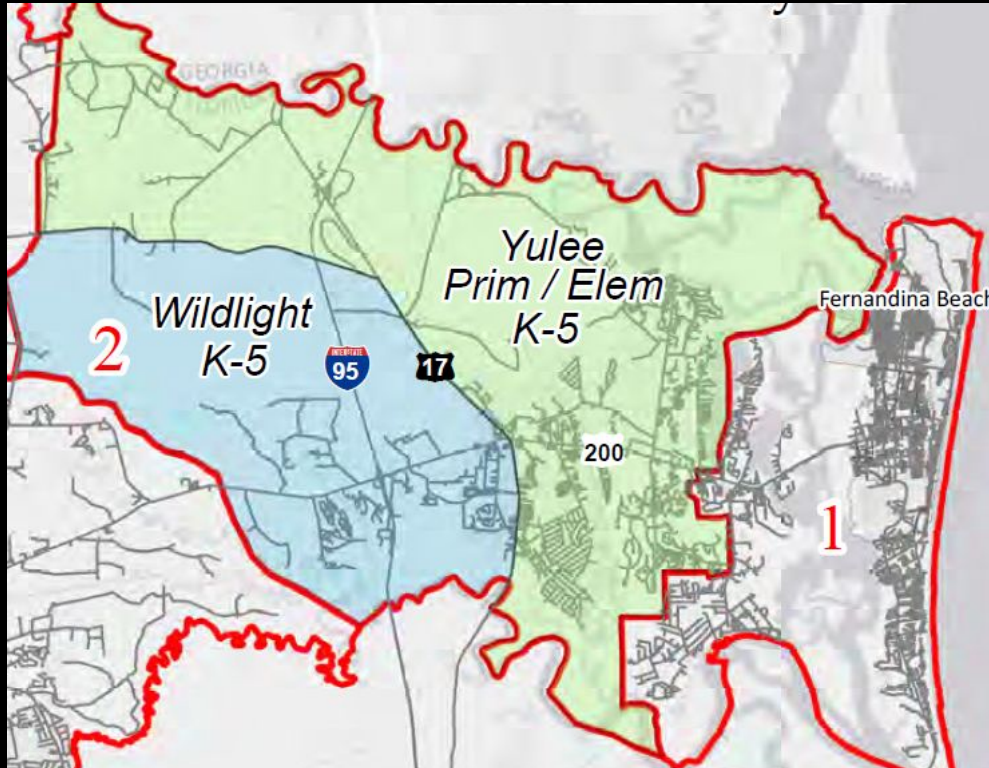
Virtual Tour



W I L D L I G H T

TRAILBLAZERS

Attendance Zone Information



- **Wildlight (K – 5)**

This attendance area is bordered by County Road 108 on the north, from, Lessie Road on the west to CSX RR at Highway 17 on the east. The western border runs from the intersection of Lessie Road and 108 south to AIA and Westberry Lane (but not including Westberry Lane). The eastern border includes the areas west of the CSX RR, which runs parallel to Hwy 17, from 108 at Hwy 17 on the north to the Duval County line on the south.



Ariel view of Wildlight



Front entrance



OUTDOOR AMPHITHEATER



Media center



Main Hallway



cafeteria



School wide expectations

TRAILBLAZERS
ARE
RESPONSIBLE



WILDLIGHT
TRAILBLAZERS

TRAILBLAZERS
ARE
RESPECTFUL

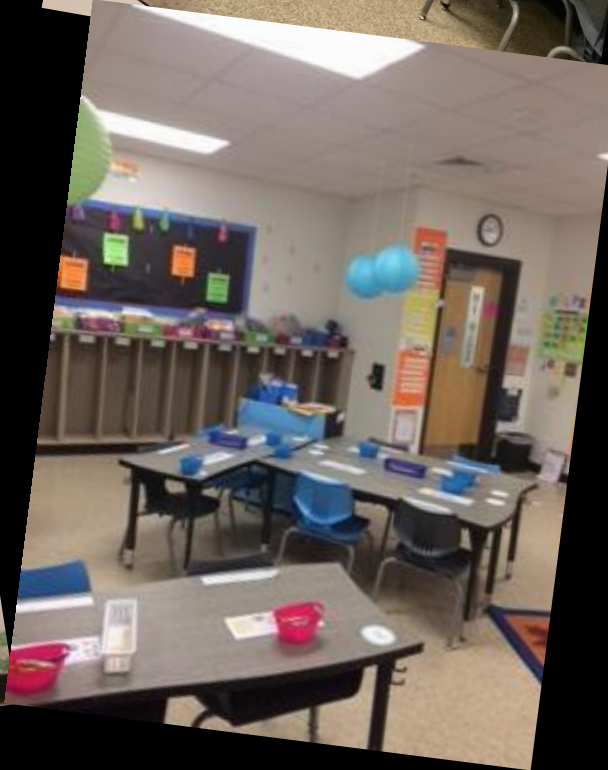


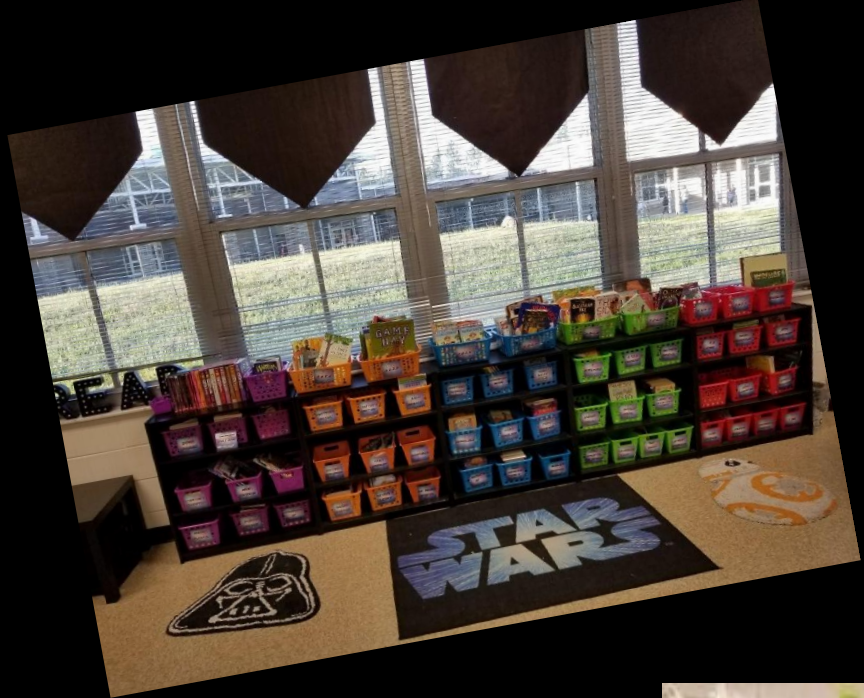
WILDLIGHT
TRAILBLAZERS

TRAILBLAZERS
ARE
ACTIVELY
ENGAGED



WILDLIGHT
TRAILBLAZERS

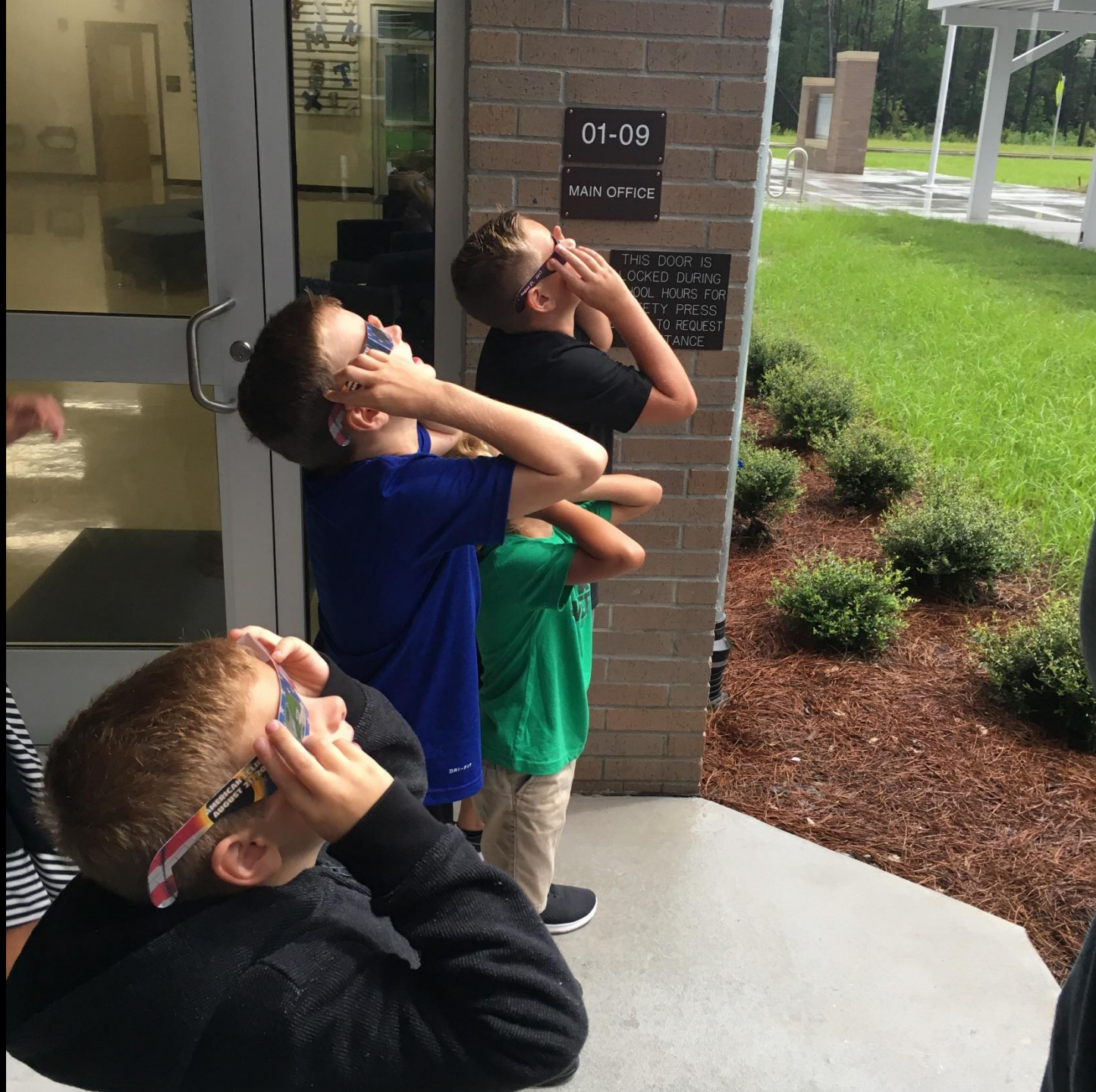








































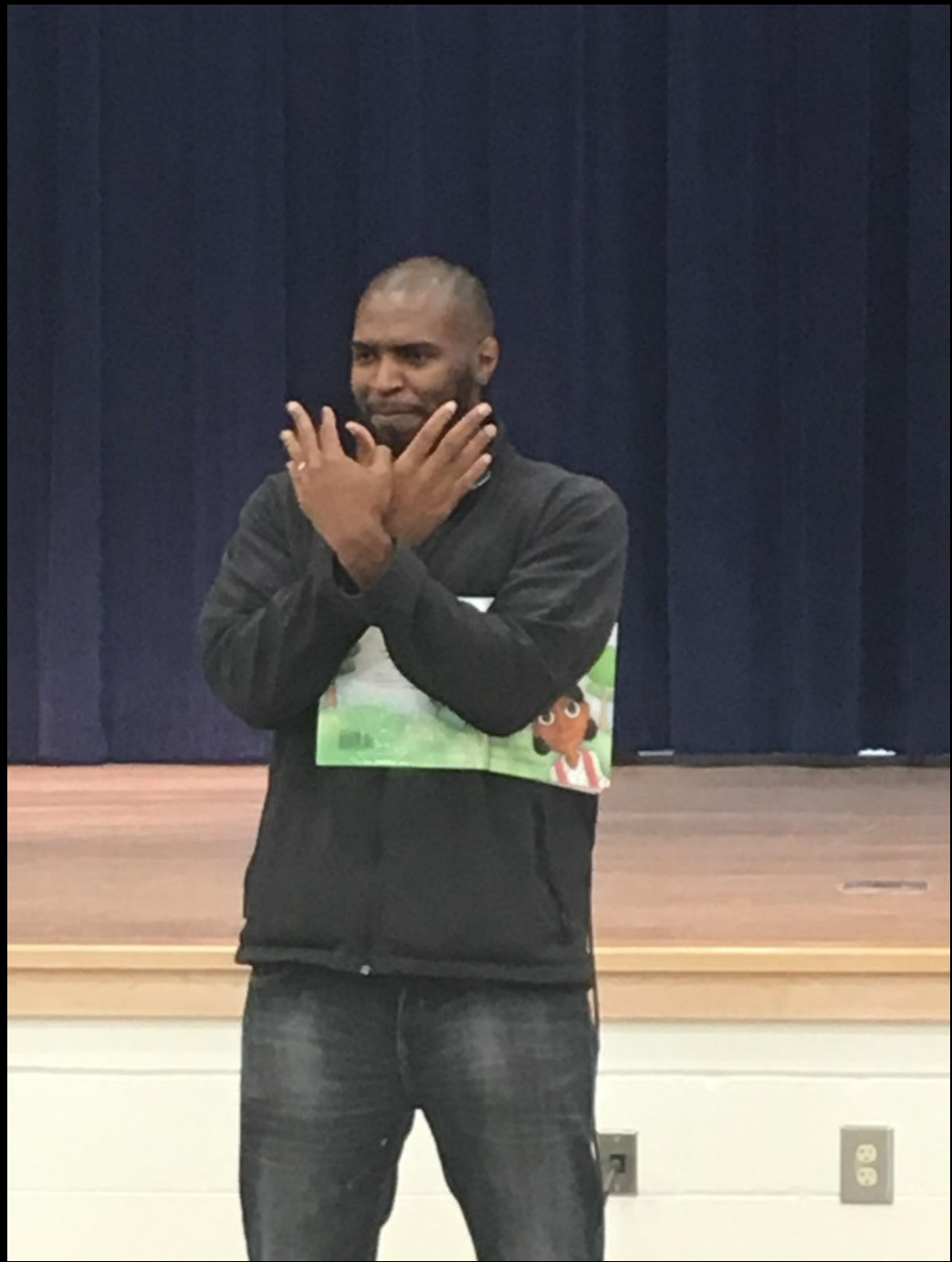






















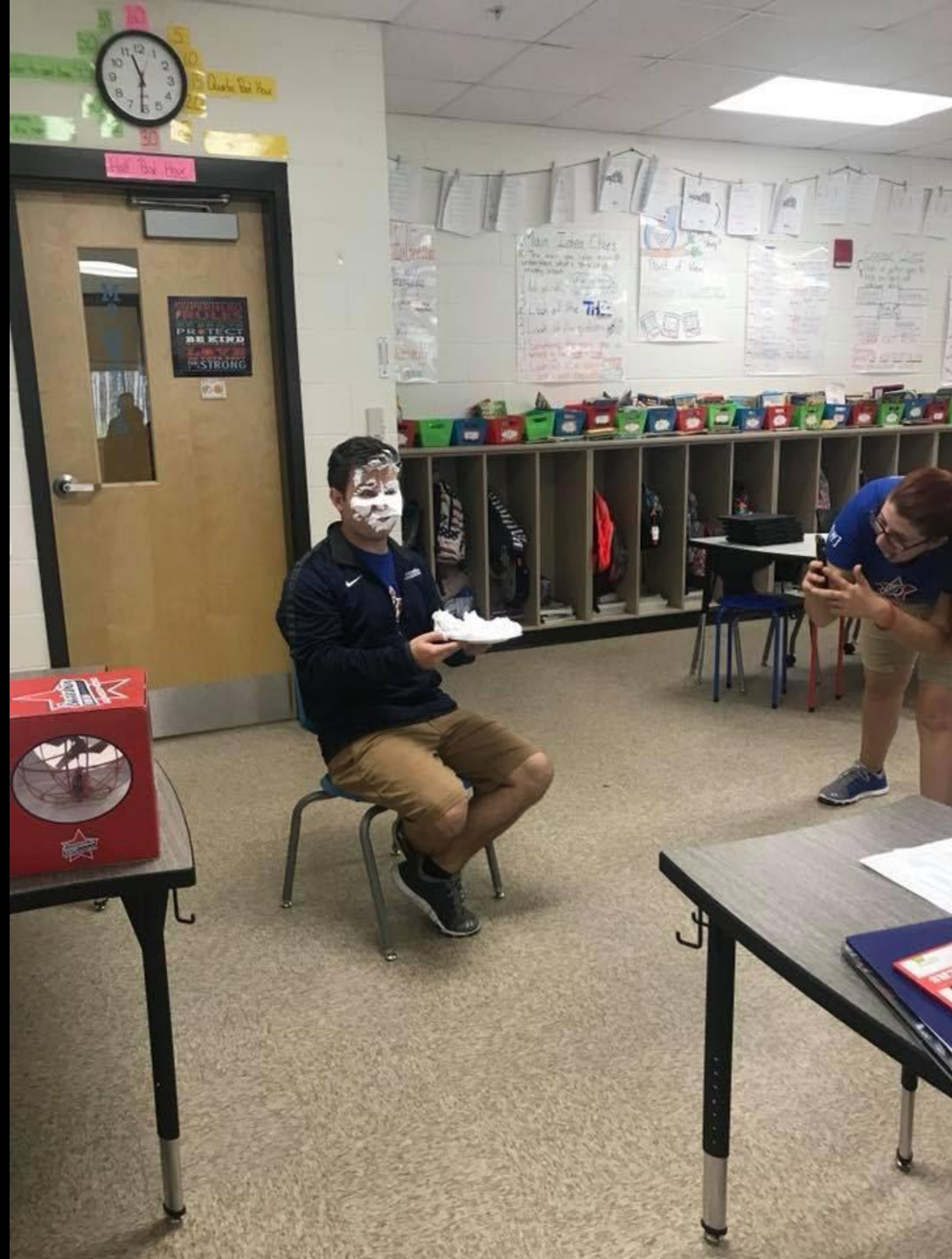


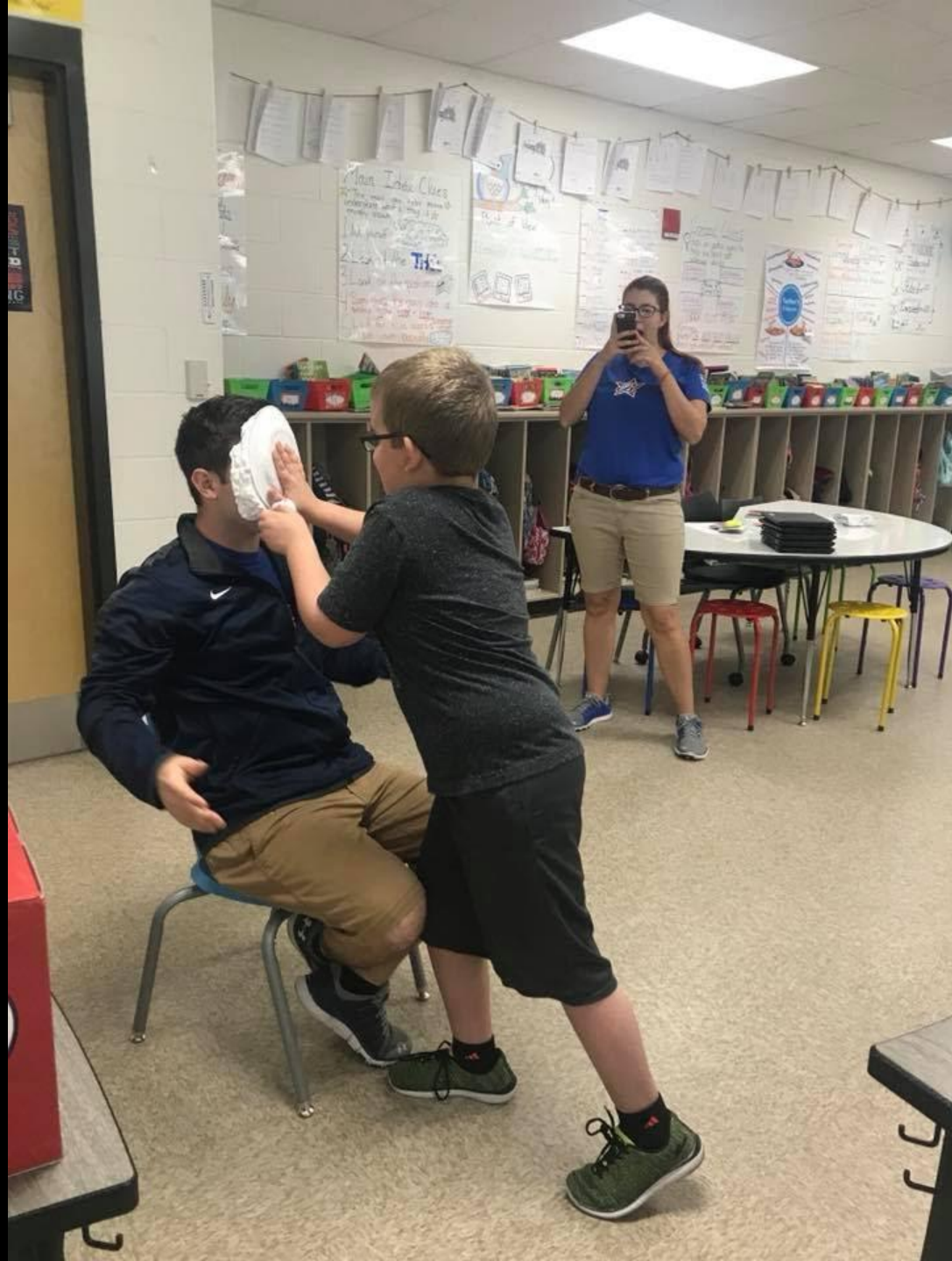













DO NOT GO where the
lead 
GO INSTEAD
where there is no path and
you will create a trail

















I Love My
White
Shoes!

I Love My
Yellow
Shoes!

I Love My
Green
Shoes!

I Love My
Pink
Shoes!

I Love My
Purple
Shoes!

I Love My
Red
Shoes!











Neigh
Neigh

Oink
Oink

Boo
Boo

Meow
Meow

Moo
M

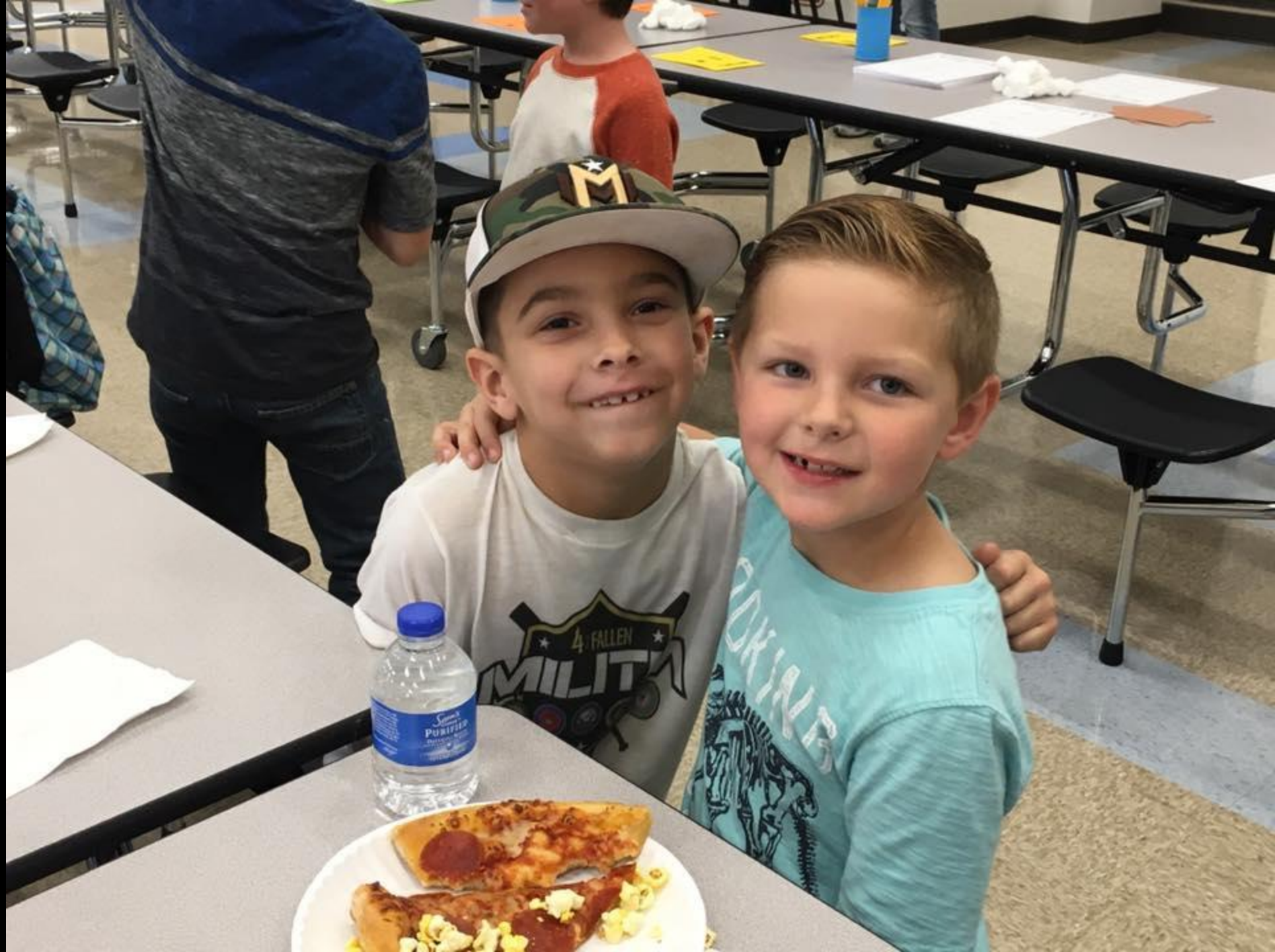
Old Mc Don
Had a Far

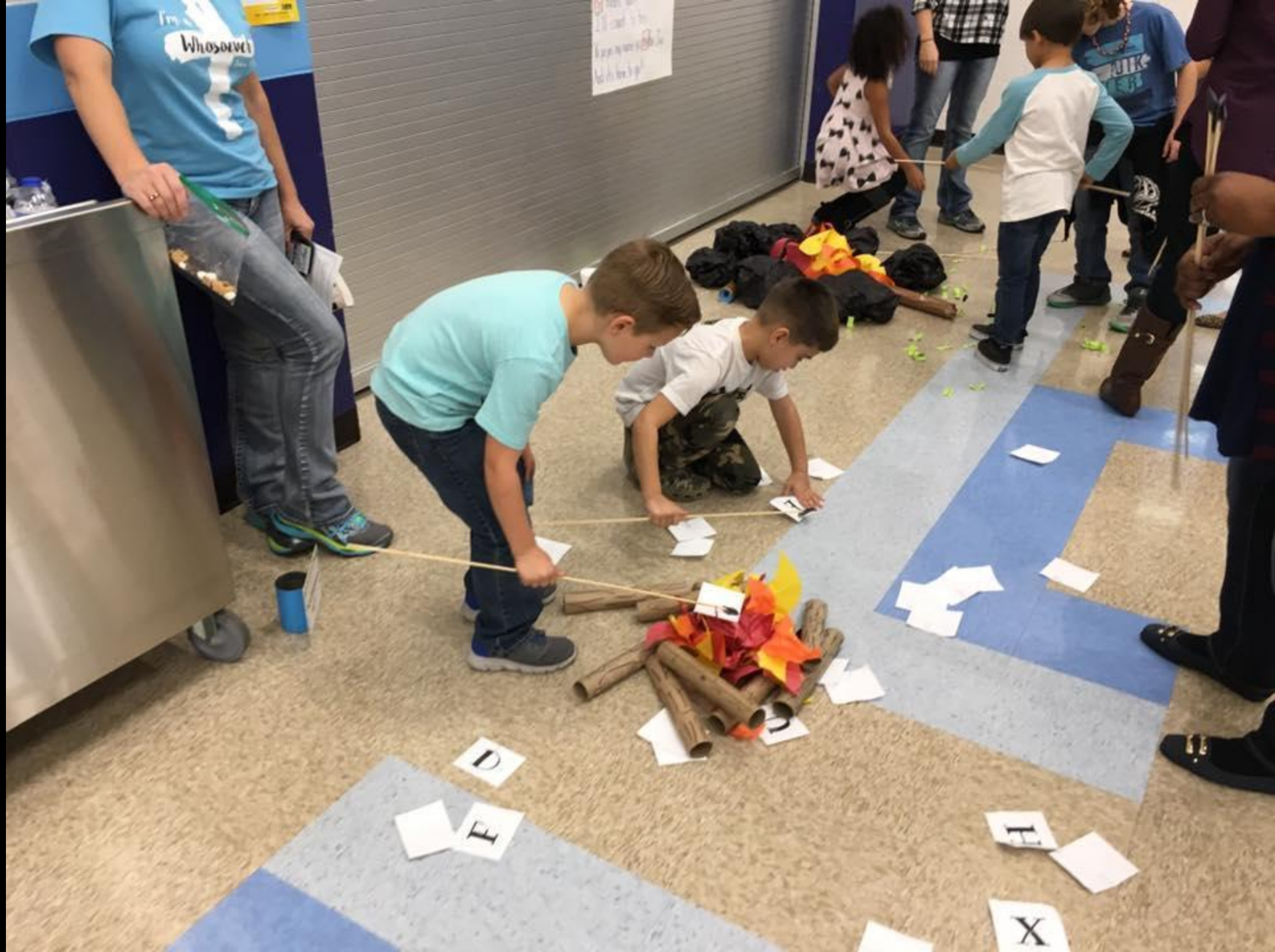
Quack
Quack

Gobble
bble
E-I-E-I-O

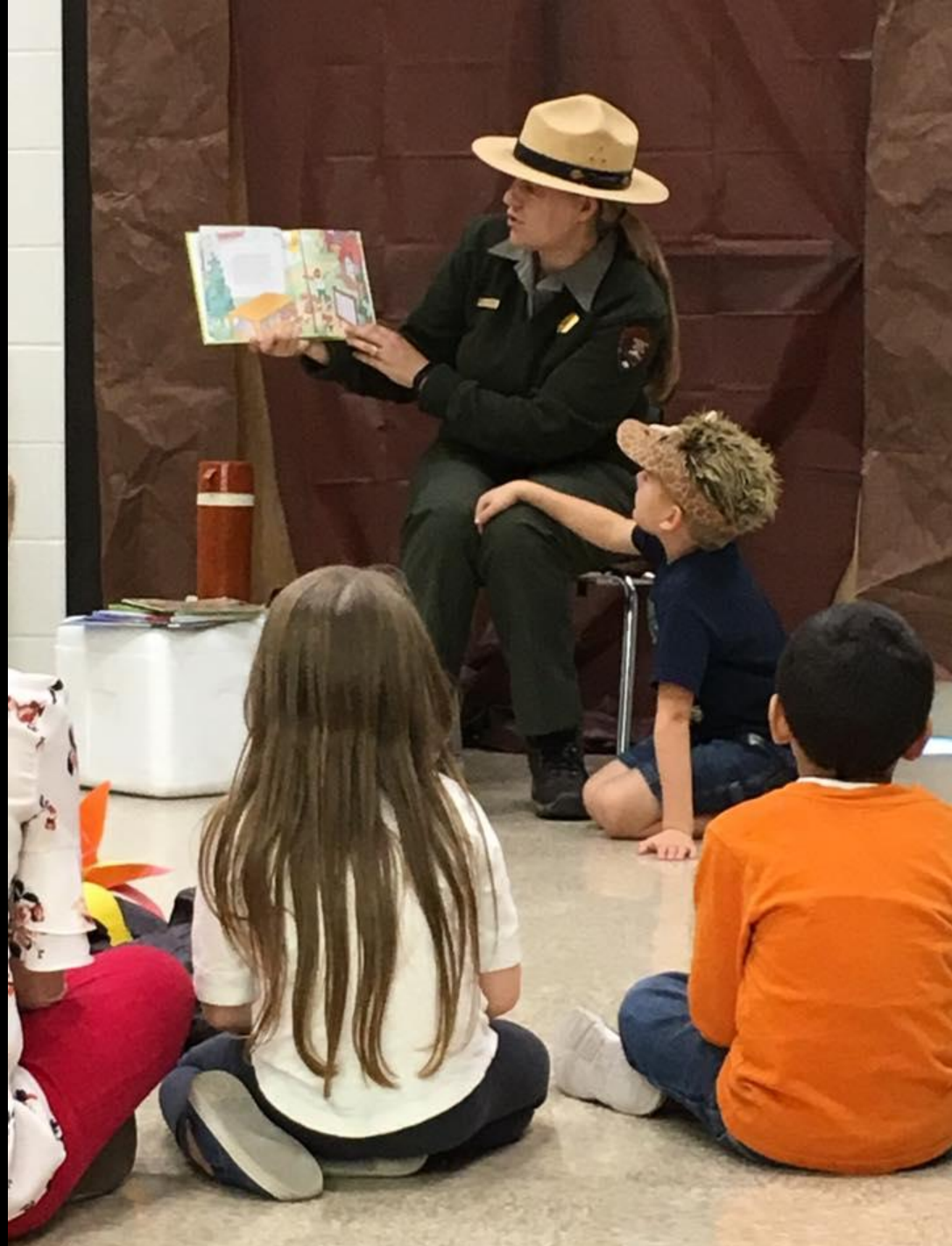














02-11



VETERANS DAY

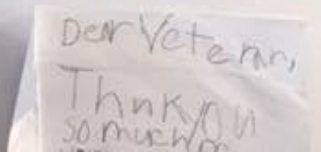


From

Veterans Day

Mrs. Campbell's

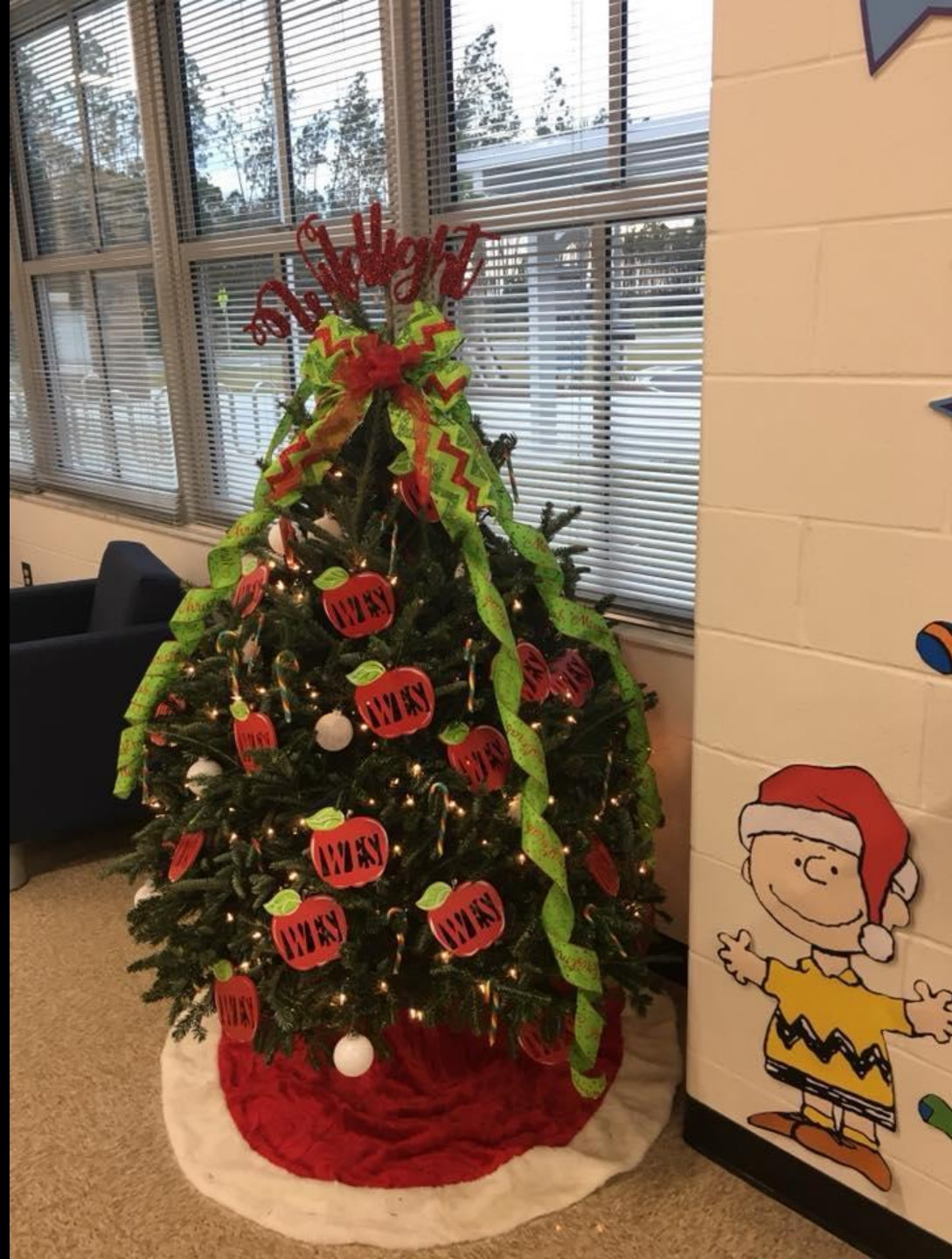
Class



HOME OF THE TRAILBLAZERS













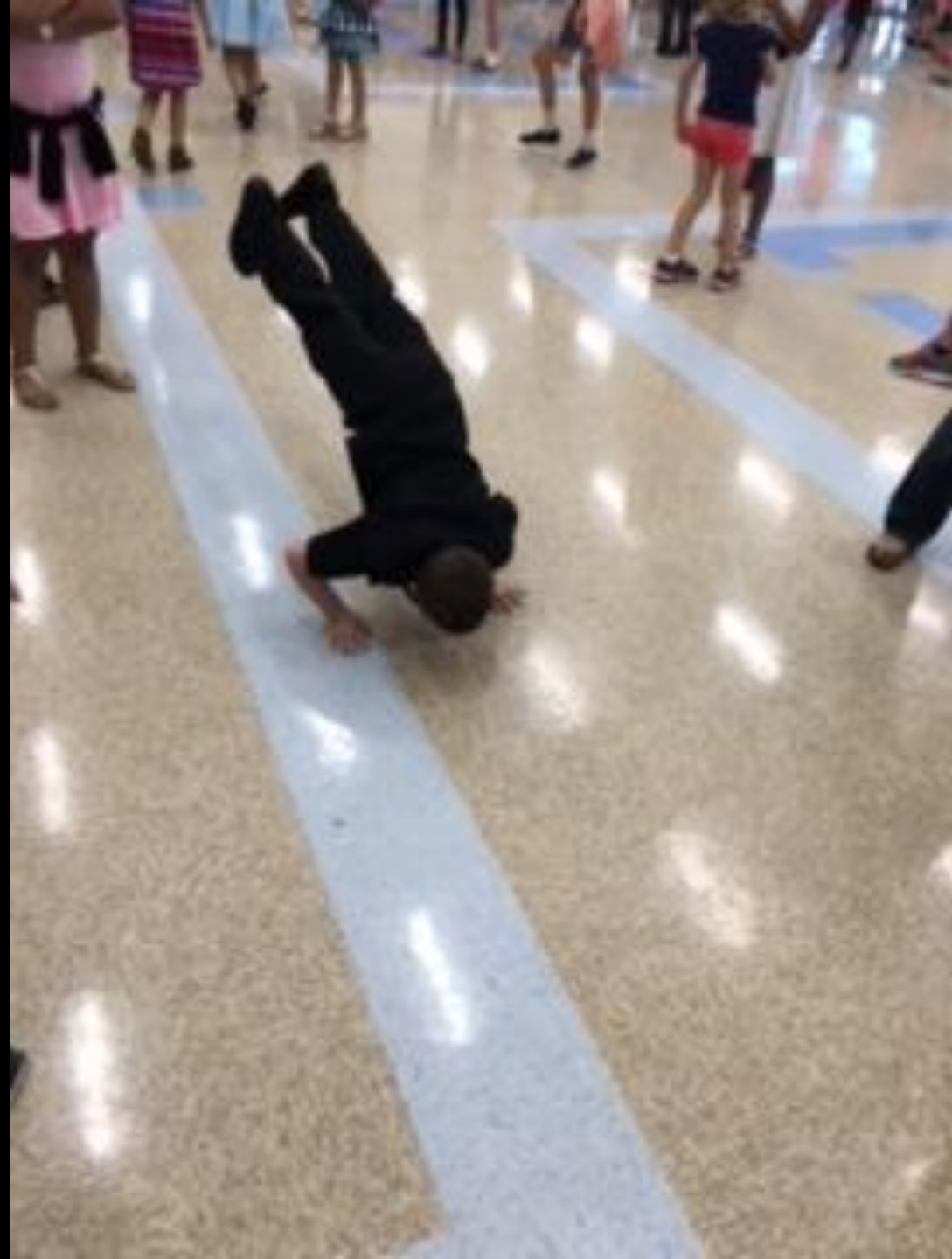














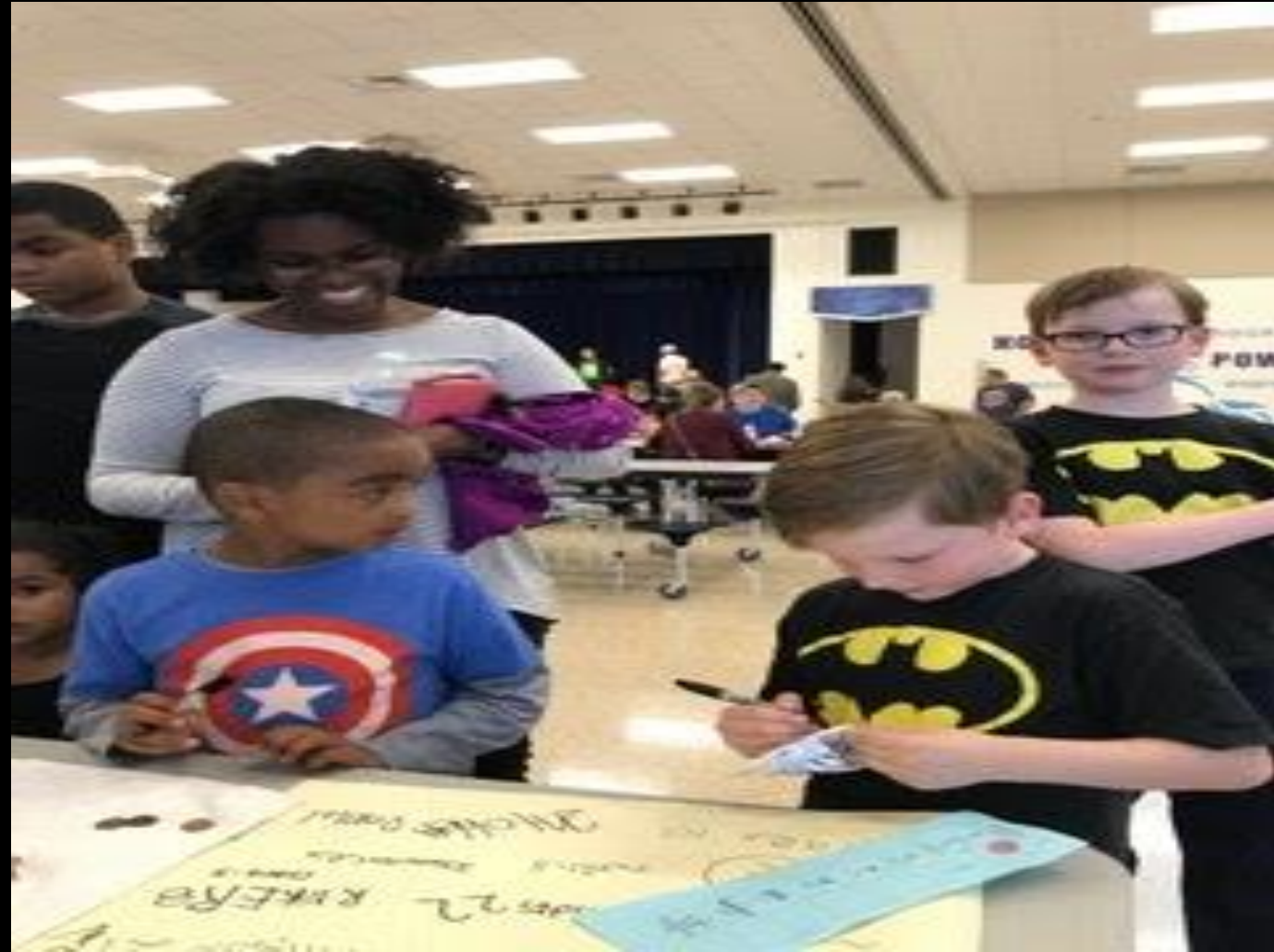


















TRAILBLAZERS



Light It Up Blue on April 2

Autism Awareness Month, "We Are ALL Unique"